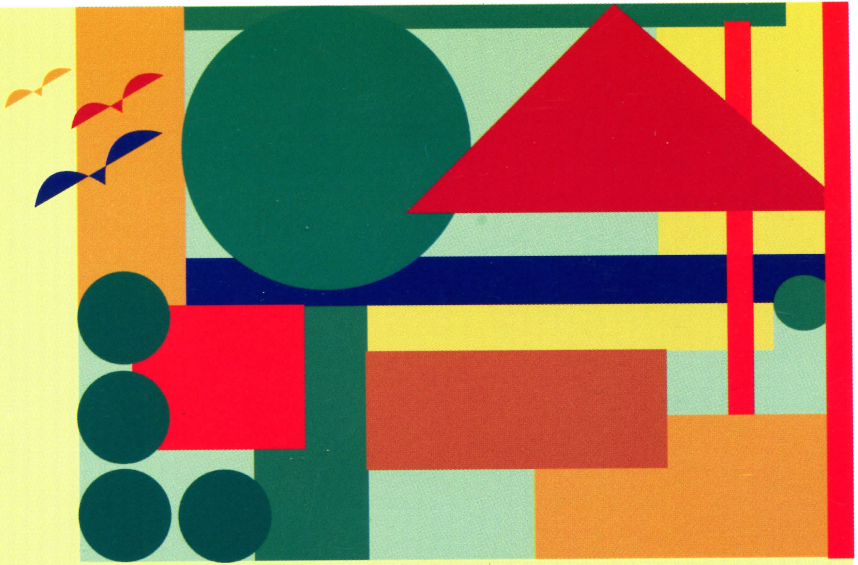
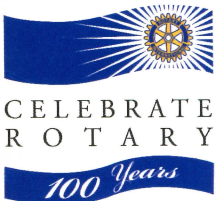


GARDEN



DesignFest 2004

WEEKEND OF NOVEMBER 13 & 14 ~ 10.00AM TILL 4.00PM



CELEBRATE
ROTARY

100 Years

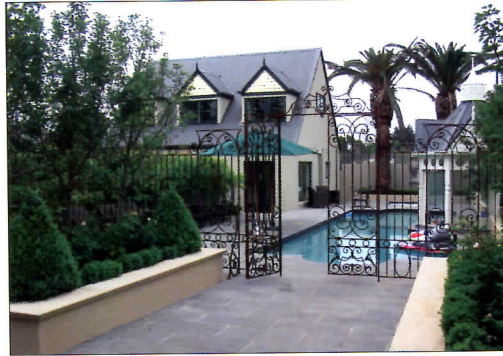
THE ROTARY CLUB OF KEW
www.gardendesignfest.com



Designer: Outdoor Creations Pty Ltd
Contact: 1300 308 082
Garden No.: 25
Gdn. Location: 34 Alfred Street, North Melbourne
 Melway Ref: 43 B2)

Description: The integration of this urban garden with the architecture of the house it was designed for was paramount in its creation as an 'attachment' to the home. Corrugated iron and tiles used in the construction and interior of the house were repeated in the construction of the garden and are featured in fencing and paving surfaces.

The creation of a sense of depth was a critical objective. It was achieved with the installation of a 'hollowed out' water fall which provides a cave like setting. The unique 'spring, rapids and waterfall' design provides a stylised version of what occurs naturally in the landscape of nature.



Designer: Andrew Nash Design & Associates
Contact: 9821 4094
Garden No.: 28
Gdn. Location: 1 Molesworth Street, Kew
 (Melway 45 C5)

Description: The garden at 1 Molesworth Street, Kew is an overall garden design comprised of many smaller gardens within, all with different purposes, flowing into each other creating one landscape concept.

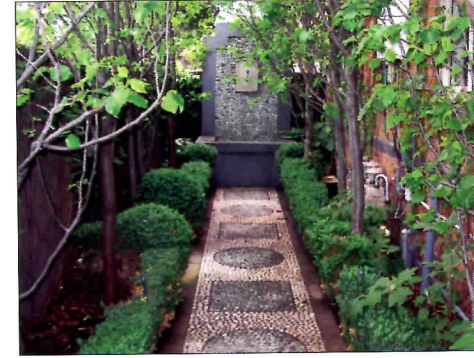
This garden has only been planted during Spring, but the majority of plants were well established it should reach maturity within only a few years.

The garden is an ongoing project and will be fully completed during the course of the coming year. Several areas such as the rear of the tennis court, front garden and plantings of boston ivy and other coverag plants are not yet established.



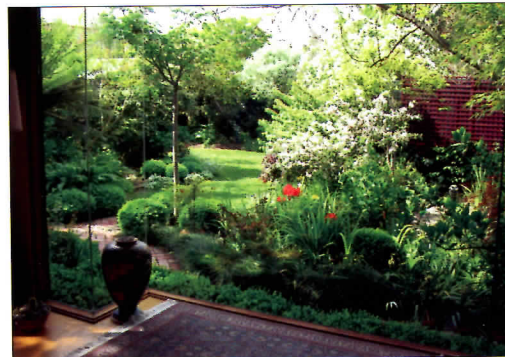
REFRESHMENTS AVAILABLE AT THIS LOCATION
 Espresso coffee \$2.50 ~ The Coffee Mob

Designer: Paul Bangay
Contact: 9521 1599
Garden No.: 29
Gdn. Location: 1/400 Barkly Street Elwood
 (Enter from Glenhuntly Road)
Contractor: Jim McCarthy Landscapes (0417 310 083)
Description: What has been achieved in this small garden is truly remarkable. The garden offers an excellent lesson in how to create a wonderful greenness in a tight linear space. By the use of decorative paving, focal points of wall fountains and mass planting of fastigiate pears Paul has turned what could have been an uninspiring corner into a shaded and harmonious outdoor sanctuary with space for an outdoor meal. That the garden also provides an effective access route and a focus for the main room in the house is an added bonus.



Designer: Ochre Landscape
Contact: 0414 439 298
Garden No.: 27
Gdn. Location: 56 Kooyongkoot Road, Hawthorn
 Melway Ref: 45 E12

Description: A copper clad entry greets the visitor at 56 Kooyongkoot Road, Hawthorn and leads to an intriguing courtyard garden. The dark grey walls and bluestone paving provides a somewhat deceptive sense of space and an illuminating backdrop for the predominantly green planting scheme. The garden has an oriental feel and features a stacked recycled glass fountain.



Designer: Sandra McMahon
Contact: 9374 1469 / 0438 376 416
Garden No.: 30
Gdn. Location: 12 Edward Street, Essendon
 (Melway 28 F3)

Description: The garden at 12 Edward Street is Sandra's own garden, and illustrates her design principles. The garden is designed to flow around the house. The semi-formal front garden reflects the period of the house (Edwardian), while the rear garden is a series of 'rooms'. A wall of uninterrupted glass acts as a giant picture frame and allows the garden to flow right into the main living area. Everywhere the use of plant material adds structure and textural interest to the garden. Space has been maximised and as this is very much a garden of rooms, mystery and surprise is created.