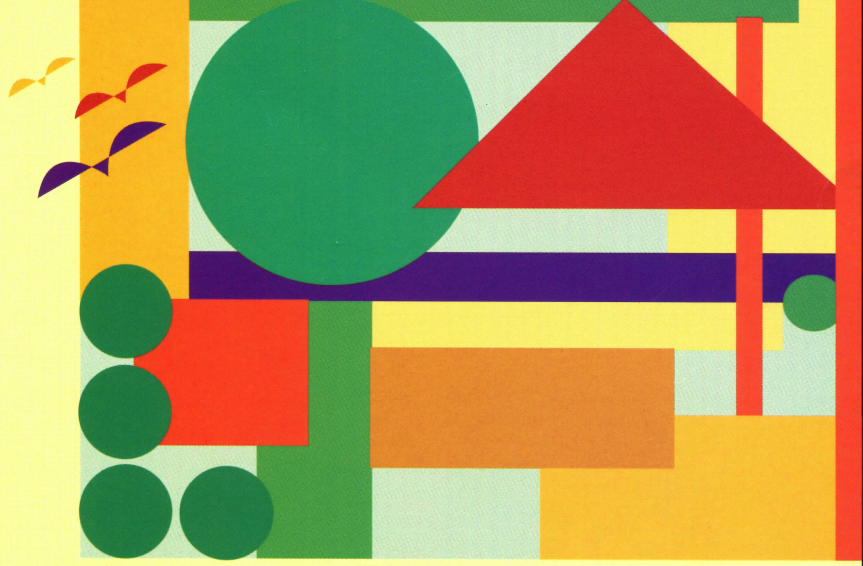


GARDEN



DesignFest 2006

Enjoy a rare opportunity to visit 30 privately owned Melbourne gardens, all professionally designed by leading landscape designers, in a spectacular open weekend on 18 & 19 November, 2006. All proceeds to Rotary Club of Kew's selected charities.

Sat, Sun 18 & 19 November
10.00am-4.30pm

Booklet cover price \$3⁰⁰

Proudly sponsored by



An initiative of the
Rotary Club of Kew

www.gardendesignfest.com

GARDEN DesignFest 2006



Designer: Sandra McMahon - Gardenscape Design
Contact: 9374 1469
Garden No: 4 **Melway Ref:** 28 G7
Location: 18 Milverton Street, Essendon

The brief for this very new garden was to create an exciting, plant driven space to enhance the beautifully restored and extended Hawthorn brick home. It also had to entice children into it as well as provide opportunities for outdoor entertaining. Now a garden of rooms, its features include a distinctive hand-pebbled path, rose and perennial plantings, an informal lawn garden with shrub borders, a 'Jungle Garden', cantilevered timber deck over a reflective pool and a Japanese inspired teahouse. Garden shed, clothesline, herb garden and utility area are also all cleverly incorporated into the design.

Designer: David Kirkpatrick - Outdoor Creations
Contact: 9490 8000
Garden No: 5 **Melway Ref:** 43 B2
Location: 34 Alfred Street, North Melbourne

The integration of this urban garden with the architecture of the house it was designed for was paramount in its creation as an 'attachment' to the home. Corrugated iron and tiles used in the construction and interior of the house were repeated in the construction of the garden and are featured in fencing and paving surfaces. The creation of a sense of depth was also a critical objective. It was achieved with the installation of a 'hollowed out' water fall which provides a cave like setting. The unique 'spring, rapids and waterfall' design provides a stylised version of what occurs naturally in the natural landscape.

